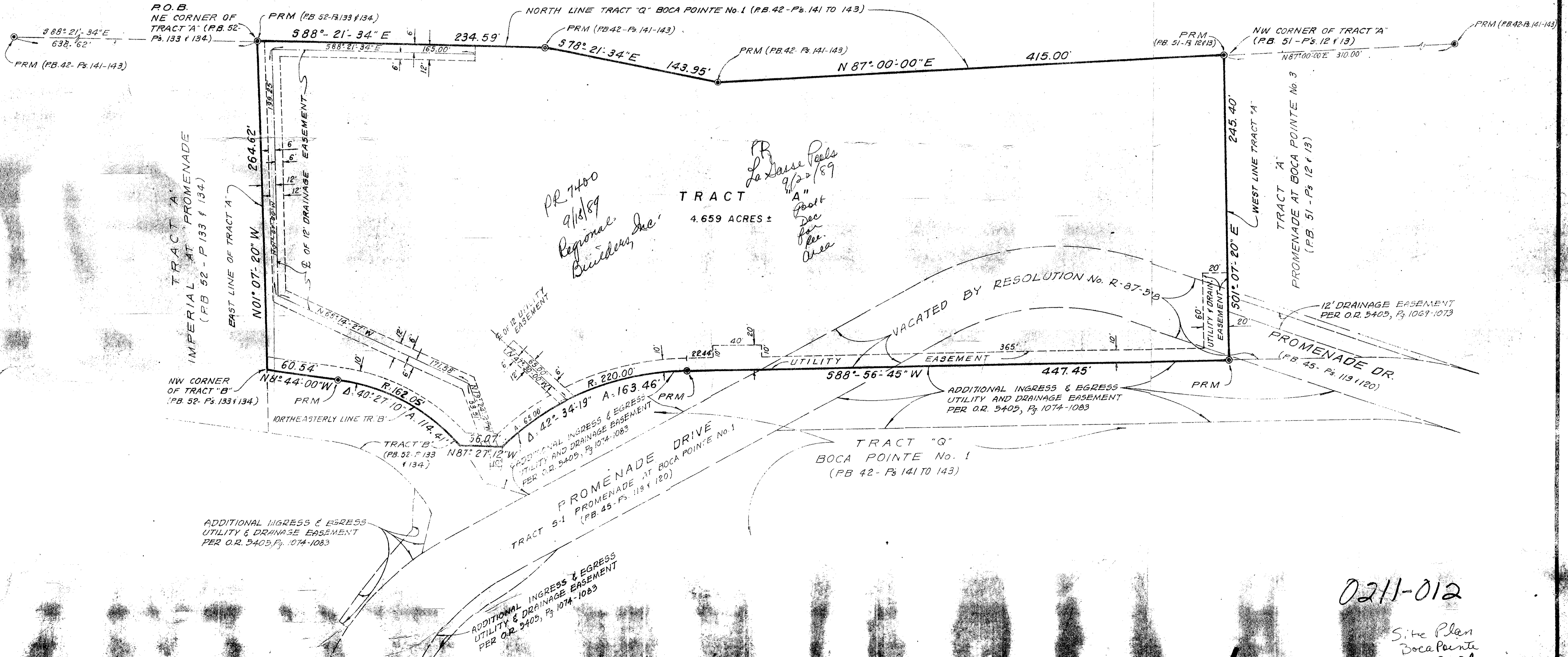
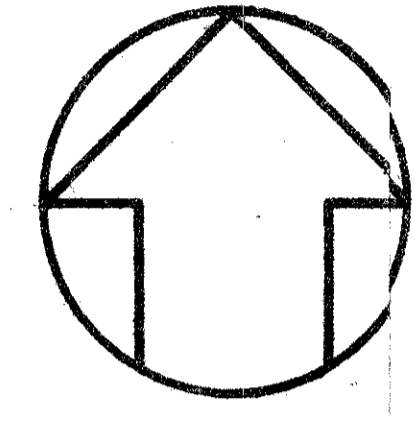


# IMPERIAL ROYALE

A REPLAT OF A PORTION OF TRACT "Q" OF BOCA POINTE No.1 P.U.D. ACCORDING TO PLAT BOOK 42, PAGE 141 THRU 143 INCL., AND A PORTION OF PROMENADE DRIVE AS SHOWN ON PROMENADE AT BOCA POINTE No.1, ACCORDING TO PLAT BOOK 45, PAGES 119 AND 120, BOTH OF THE PUBLIC RECORDS OF PALM BEACH COUNTY, FLORIDA. LYING AND BEING IN SECTION 33, TOWNSHIP 47 SOUTH, RANGE 42 EAST, PALM BEACH COUNTY, FLORIDA.

FORTIN, LEAVY, SKILES, INC.  
CONSULTING ENGINEERS & LAND SURVEYORS  
299 CAMINO GARDENS BLVD., BOCA RATON, FLA. 33432

APRIL 1986 40' 20' 0 40' 80' JOB No. 1686  
GRAPHIC SCALE  
SCALE 1" = 40'



33/14/79  
DIVISION Imperial Royale  
NO. 58  
TRACT 79  
DATE 04/15/86  
BY FLS  
JOB NO. 1686  
JOB NAME  
TAZ 820

0211-012

Site Plan  
Boca Pointe  
Tr. Q-2A

IMPERIAL ROYALE 58/79